

# SYNERGY

## BURN-OUT

### RUBBER TIRE MARK REMOVER & PRESPRAY

Removes Stubborn  
Rubber Marks  
FAST

Penetrates and  
Loosens Dried  
Soils

Dilutable for a  
Wide Range of  
Cleaning  
Applications

Makes Floor  
Cleaning Easier,  
Promotes Neat,  
Uniform  
Appearance

Pleasant  
Fragrance

#### Equipment List

- ✓ Wet floor signs
- ✓ Autoscrubber with grit type brushes
- ✓ Push broom or sweeper

Available in sizes:  
Quart, 1 and 55 gallon containers.

Wear safety equipment recommended on MSDS, place wet floor signs and read all directions and cautions prior to beginning work.



#### Professional Recommendations

- Apply liberally, and allow to work several minutes for best results
- Use "grit" type brushes on your autoscrubber to enhance cleaning on unfinished concrete and other industrial floors
- Overlap your cleaning passes to assure uniform cleaning and "double scrub" when heavy soil is present

#### Surface Safety

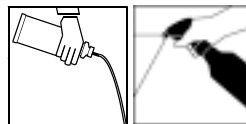
- Safe on most industrial surfaces

#### Specifications

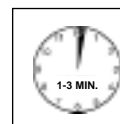
Appearance	Clear, yellow liquid
Odor	D-Limonene
Density (lbs/gal)(±0.1 @20°C)	8.55
pH (Conc. ±0.5 @20°C)	12.5
Refractive index (±0.0020 @20°C)	1.3628
Foam generation	Moderate
Stability (40°-120°F)	Stable
Freeze/thaw stability	OK 3 cycles
Shelf life (Closed containers, 40°-120°F)	1 year minimum
D.O.T. classification	Not regulated
Biodegradable (per 16CFR260)	Yes



Wear safety equipment recommended on MSDS. Read all directions and cautions prior to beginning work. Remove loose soil and garbage. Before cleaning floors, place Wet Floor signs near work area.



Apply liberally to rubber marks in a workable area.



Allow to work a few minutes.



Scrub thoroughly (double scrub if necessary). Repeat as necessary.

